

20240 | Self-propelled harvester

NEW COLLECTOR VERSION:
XXXL, TO EXCEED ALL LIMITS



The new **20240** ensures unprecedented collection capacity and great reliability thanks to the **John Deere – Stage V / Tier 5** engine. The Nexus cab provides a new level of comfort and automatic controls make harvesting easier.

LARGEST HOPPER CAPACITY, PERIOD.

6.5 m 3 hopper.

The 20240 is the best choice for large harvesting areas and extensive orchards.

The cabin “Nexus” ensures an extreme comfort level and automated controls for the best fruit harvesting experience.

Specific Features

- Gigantic harvest capacity
- Reliable and with low consumption
- 6 Cylinders John Deere Engine
- Super wide tires
- Lateral fan with extra power
- 199 cm – Perfect height

20240 | Self-propelled harvester

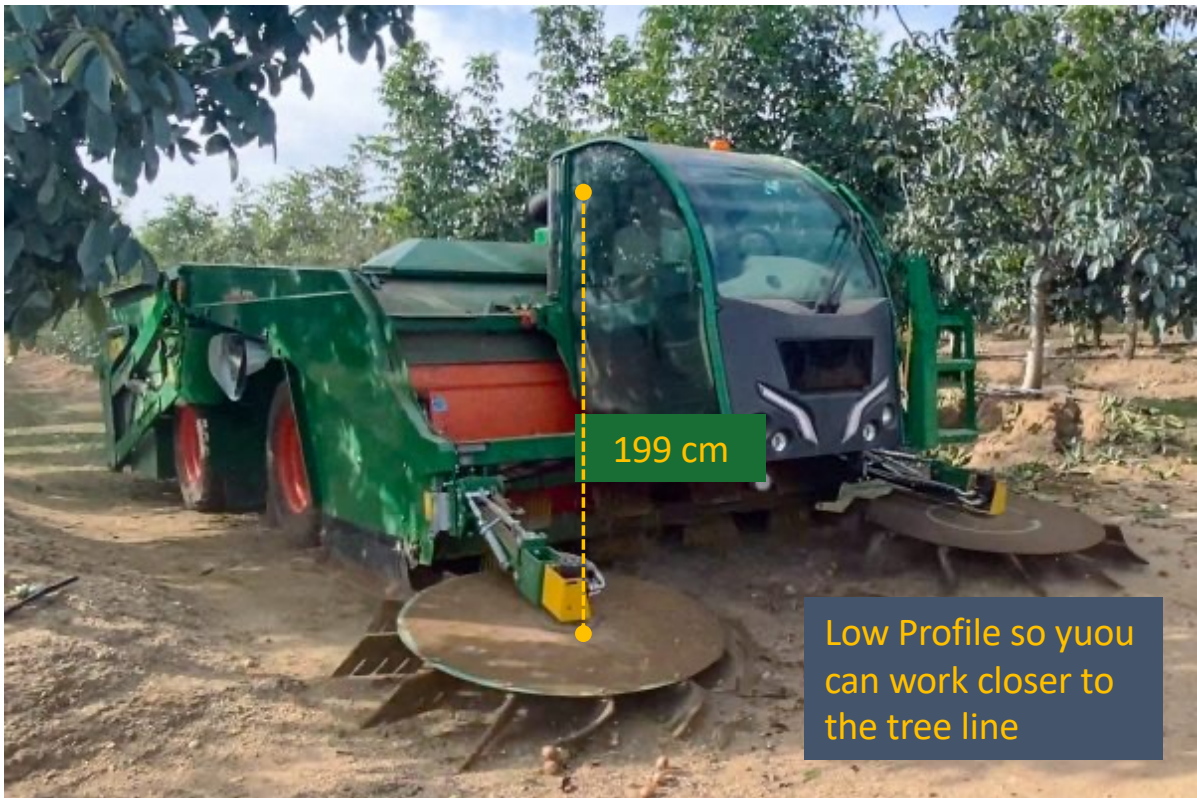
NEW COLLECTOR VERSION:
XXXL, TO EXCEED ALL LIMITS

LARGEST, FASTEST, MOST POWERFUL



6.5
m³ **LARGEST HOPPER**
CAPACITY, PERIOD.
The 20240 is the best
choice for large
harvesting areas and
extensive orchards.

LESS DISCHARGE STOPS
MUCH FASTER HARVEST



20240 | Self-propelled harvester

NEW COLLECTOR VERSION:
XXXL, TO EXCEED ALL LIMITS



COMFORTABLE NEXUS CABIN
Dust & Sound Insulated.
Category IV air filter,
Air Conditioning
Air recirculation with automatic control of temperature
Joystick & Controls
Everything at hand with controls and joystick gathered on the armrest



All cotrols at the tip of your finger using a multi-functional joystick and a touch screen monitor that helps you monitor all functions, including multiple cameras.



6 Cylinders John Deere Engine
Producing 225 hp at 1,800 RPM